



PERTH & WESTPORT

July 10-11, 2024



Double Rates from

\$579.⁰⁰

Per person based on double occupancy. Taxes included.

Single: \$699.⁰⁰ | Triple: \$559.⁰⁰ | Quad: \$539.⁰⁰

Join us on our short overnight getaway to the charming towns of Perth and Westport in Lanark County, Ontario. This tour was a smash hit as our summer mystery tour last year, so we've decided to offer it once again! Perth is the kind of town that you can't help but fall in love with. On your first day you will get to learn about Maple Syrup at Wheelers Maple Company and enjoy a guided tour of downtown Perth with a local legend. You will have free time to shop and enjoy the historic downtown, filled with boutique shops and heritage buildings - some dating back to the 19th century. Enjoy an included lunch at Fiddlehead's downtown and take in a wine and cheese tasting at 1827 Wine and Cheese Lounge. We will spend one night at the lovely Best Western Plus Perth Parkside Inn & Spa before heading off to the charming village of Westport. Steeped in heritage, and nestled in the heart of the Rideau, Westport is a welcoming small village that's big on community. You will enjoy spectacular views from the Foley Mountain Lookout and will have plenty of time to explore the local shops and cafes. This afternoon we will have an included lunch with wine tasting at Scheuermann Winery before heading home. This tour will also include the services of a Lakeshore/Cardinal Tour Director and so much more. Come enjoy the best of small-town Ontario with us this summer! Please note that this is an active tour and may not be suitable for those with mobility constraints.

17 King Street East
Bowmanville, Ontario L1C 1N1
Phone - (905) 623-1511
Toll Free - (800) 387-5914
Email: info@lakeshoretours.ca
Website: www.lakeshoretours.ca



Cardinal - 50024801
Lakeshore - 50024799
Wholesale - 50017816

8 - 18 Cambridge Street South
Lindsay, Ontario K9V 3B6
Phone - (705) 324-2777
1-877-343-7773
Email: info@cardinalcoachtours.ca
Website: www.cardinalcoachtours.ca

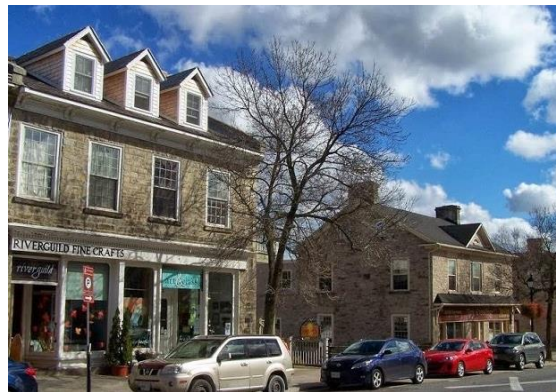
OUR ITINERARY

Day 1: Perth, ON (L)

Board the coach this morning at your pre-determined pickup location. We're heading to the charming small town of Perth, Ontario located in Lanark County. Lanark County was recently dubbed the Maple Syrup Capital of Canada, so it is only fitting that we take you on a guided tour of Wheelers Maple Company, where you'll discover the secrets behind harvesting maple syrup. After our maple syrup demonstration, we'll enjoy a tasty, included lunch at Fiddleheads restaurant. This afternoon we'll explore downtown Perth with a local legend. We'll get to learn more about the town's historic vibe, 19th-century mason-crafted buildings, cute shops, and iconic Town Hall. Oh, and we can't forget the wine and cheese tasting at 1827 Wine and Cheese Lounge – it's a treat! Tonight, we'll check in at the comfy Best Western Plus Perth Parkside Inn & Spa and the evening will be at your leisure to grab dinner (on your own) or kick back and relax at the hotel.

Day 2: Westport & Newboro, ON (B, L)

This morning after an included breakfast at the hotel we're off to Westport, a small-town oozing with heritage and sitting pretty in the heart of the Rideau. Take in the awesome views at Foley Mountain Lookout, wander around town, and indulge in an included wine tasting and lunch at the serene Scheuermann Winery. After lunch we will begin our journey home, but the day won't be complete without a stop at the famed Kilborn's on the Rideau in Newboro, Ontario. Our bus will return you to your original pickup locations this evening and bid you farewell.



A deposit of \$100.00 is due at the time of booking. Final payment will be due 45 days prior to departure. All payments are non-refundable if you cancel on your own terms. The listed itinerary is only a guideline and is subject to change. Cancellation insurance is highly recommended. Please visit our website for our full terms and conditions: www.lakeshoretours.ca/our-policy/